



SARATOGA PLACE

Apartments

CMC Property Management, LLC

859.647.3655

saratogaleasing@cmcpm.com

3401 Queensway Dr., Erlanger, KY 41018

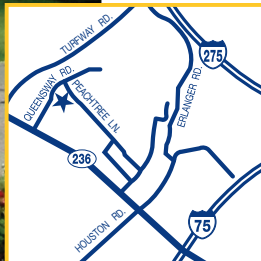


Unique interiors and beautifully-landscaped grounds welcome you home as you pull into our tree lined streets and immediately feel at home in our serene community. Choose from one and two bedroom garden apartments or a three bedroom townhome with beamed ceilings and wood paneling (in select units). All this and more awaits you, plus a great location just off Donaldson close to Turfway, dining, shopping NKY Airport and our property is ON the bus line! Spend an afternoon at our sparkling swimming pool, walk the dog down the street and meet your neighbors, or spend the afternoon at the playground with the family! Add in the professional on-site management and you have a winning combination!

We are waiting to welcome you home today!

Our Mission...

To simplify the lives of our customers in a cost effective way so they can have more time to pursue what is truly important to them.



1 & 2 Bedroom Garden Apts.

3 Bedroom Townhomes

Fully Equipped Kitchens

Ceiling Fans

Air Conditioning

W/D Hook-ups (townhomes)

Balcony or Patio

Mini Blinds

On-site Laundry Facility

Sparkling Swimming Pool

Boone County Schools

On Local Bus Line

On-site Management

All Pets Welcome

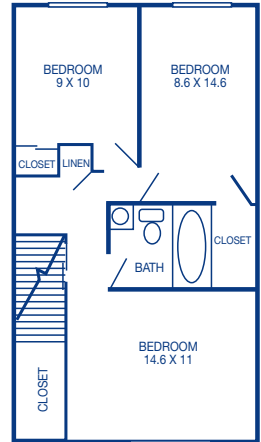
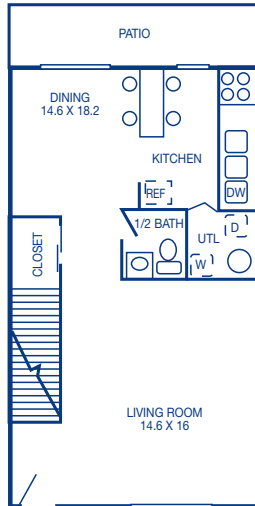
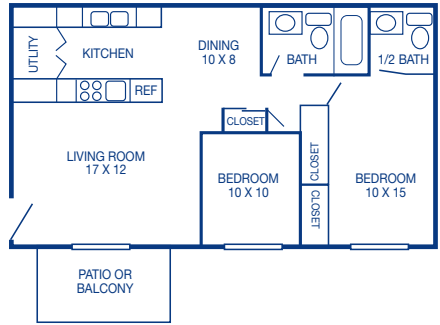
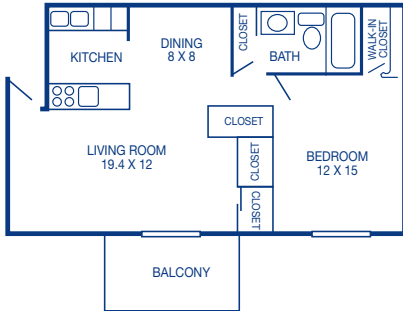
For availability, visit us at
www.cmcpm.com

See floor plans on reverse side.





Floorplans



Three Bedroom

1,200 Sq. Ft.